

Z Series

SUBMITTAL DATA SHEET

DHZ12NWB21S/DHZ12CSB21S		12,000 BTU/H Wall Mounted Heat Pump System		
Job Name:		Location:		
Purchaser:		Order No.:		
Engineer:				
Submitted To:	For:	Ref:	Approval:	Construction:
Submitted By:		Date:		
Unit Designation:		Schedule No.:		Model No.:

FEATURES

- Variable Speed (Inverter)
- 4 Way Airflow Operation
- Low Ambient Heating down to -22 deg F
- Standard Mobile Wi-Fi Control
- 7 Indoor Fan Speeds
- Wireless Remote with LCD Display



DHZ12NWB21S



DHZ12CSB21S



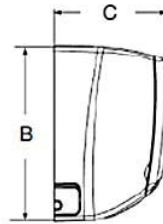
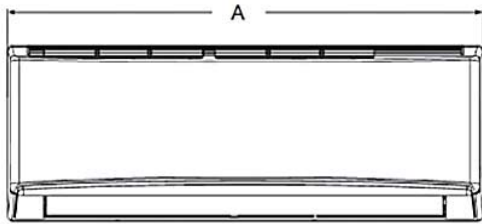
DRCZ

System Rating		
System Type		Heat Pump
Rated Cooling Capacity	Btu/h	12,000
Cooling Capacity (Min-Max)	Btu/h	2,900-15,354
Rated Heating Capacity	Btu/h	13,000
Heating Capacity (Min-Max)	Btu/h	3,071-18,766
EER		12.7
SEER		23
HSPF		10.5
Rated Voltage	V-PH-Hz	208/230-1-60
Rated Cooling Current	Amps	6.5
Rated Heating Current	Amps	6.9
MCA	Amps	13
MOCP	Amps	20
Max. Total Piping Length	ft. (m)	65.5 (20)
Max. Total Piping Height	ft. (m)	33 (10)
Piping Connection - Liquid (O.D.)	in.	1/4
Piping Connection - Gas (O.D.)	in.	1/2
Indoor Model Number		DHZ12NWB21S
Set Temperature Range	°F (°C)	61~86 (16~30)
Airflow High to Low	CFM	471/441/412/383/353/294/265
Sound Pressure Level High to Low	dB(A)	42/39/35/31/27/25/23
Unit Dimension (WxHxD)	in. (mm)	38x13x8 (960x320x205)
Net / Gross Weight	lbs (kg)	31/38 (14/17)
Outdoor Model Number		DHZ12CSB21S
Operation Range - Cooling	°F (°C)	0~129 (-18 ~ 54)
Operation Range - Heating	°F (°C)	-22~75 (-30~24)
Refrigerant		R410A
Refrigerant Charge	oz (kg)	49 (1.4)
Unit Dimension (WxHxD)	in. (mm)	35x24x15 (899x596x378)
Net / Gross Weight	lbs (kg)	97/104 (44/47)
Sound Pressure Level dB(A)	dB(A)	55

DHZ12NWB21S/DHZ12CSB21S

Unit: Inch

Indoor Unit Dimensions

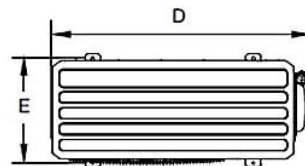
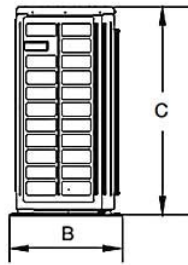
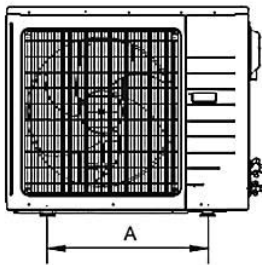


Dimensions	
A	37.8
B	12.6
C	8

Drain Connector	5/8-in OD
-----------------	-----------

Outdoor Unit Dimensions

Unit: Inch



Dimensions	
A	21.7
B	14.9
C	23.5
D	35.4
E	13.9

Notes:

1. Recommended cable type between Outdoor and Indoor Unit, 14-4 AWG Stranded Copper THHN 600V Wire
2. Power wiring cable size must comply with applicable national and local codes
3. Test conditions are based on AHRI 210/240

